

How has ROTARY
changed the every day
lives of Good Samaritan
Staff and Clients?

The Good Samaritan Carpentry Shop



History – Carpentry Shop

The carpentry shop at Good Samaritan has been operational since January 2002. The Rotary equipment was received in March 2003. Currently, the Carpentry is employing 4 clients on a regular basis and 1 client based on need. Two of the clients have been working at the Carpentry for 2 years. The third has been there for a year and the fourth for about 4 months. We are planning on hiring another clients in the first four months of this year.



Carpentry Shop

Since March 2003 the program manager and a professional carpenter have worked hard to teach to the apprentices how to use the tools in order to build high quality furniture. To present, we have been able to teach three of the workers almost all the phases of carpentry construction using the machines that have been purchased. Our goal is to train this first class of apprentices and then hire them in long-term positions as supervisors of other apprentices, so to increase the capacity of the carpentry shop. In our vision, the carpentry would provide work for about 15-20 youth.

We have estimated that we will need two years in order to train a youth that does not know anything about carpentry into a good carpenter.

Teaching youth from orphanages the carpentry work is an extremely challenging job. These youth have not only limited theoretical knowledge (some of them cannot read and write fluently) but they also have serious behavioral problems

Carpentry Shop

We have estimated that we will need two years in order to train a youth that does not know anything about carpentry into a good carpenter.

Teaching youth from orphanages the carpentry work is an extremely challenging job. These youth have not only limited theoretical knowledge (some of them cannot read and write fluently) but they also have serious behavioral problems

They have little faith in their own capacity; they sometimes expect others to provide them with the basic necessities of their lives and often are not reliable (for example, they don't come to work on time or leave the workplace when they feel like they have to do something else). By training a small group of youth we are able to concentrate on them well and also to break some of the worst group behaviors that they have developed by living together in an orphanage. Most of these orphans are very skilled workers and perform well when they are alone with the manager, but they influence each other negatively when they are together.

Carpentry Shop

Up to now, the Carpentry has operated on an informal basis. It has produced furniture, stairs, windows and doors for the HFH houses in Beius and furniture for the GSB apprentices and staff and their families. Six month ago, we started the process to turn it into a legal for profit business. Beginning with this January, the carpentry has become a business that will be able to sell to the public. We hope to be able to use the Carpentry to raise money that can make GSB less dependent on donations.

One of the three apprentices is now attending a carpentry course in Arad that will allow him to have a diploma recognized by the Ministry of Work in Romania. After him, we would like to send the other three youth to the same course.

Rotary Equipment

Carpentry Shop

Big Circular Saw



Big Circular Saw (Steton)

Before the purchase of this machine, it took four men to be able to cut big sheets of melaminated particleboards with the old small circular saw. Given the really small size of the old machine, it was hard to obtain straight cuts and often waste of material was high.

With the new Steton circular saw, two men can easily cut a big sheet of particleboard. The machine is extremely precise provides us with high quality outcome. The amount of waste has been tremendously reduced, as well as the time necessary for the cutting. In addition to longitudinal cutting, it can cut at a specified inclination (for example, 45 degrees) with great quality results. The Steton circular saw is a combined machine, meaning that it can perform more than one action. It is in fact also a router with which we can make different profiles for doors, different dovetails, laminated floors. The high power of this machine allows up to work in a totally different way than before, both with thin and thick wood.

Big Circular Saw (Steton)

The machine is central to the operation of the Carpentry Shop. Every day, it cuts more than 10 big sheets of laminated particleboards, totaling more than 700 meters of cutting per day.

Dust collectors

Dust collectors are turned on in the carpentry shop every time there is cutting to do. Before having the dust collectors, workers had to stop very often to clear their eyes from sawdust. The great amount of cutting done at the carpentry used to produce sawdust that could not exit the building and remained in the air or stuck on the machines.



Dust collectors

Dust collectors therefore make the carpentry a cleaner and healthier place because they reduce the amount of sawdust present in the area. They are used for vacuum cleaning the dust that remains around the machines.

Compressor

The compressor is an extremely used machine in the carpentry shop. It is a high quality instrument that has the ability to perform more than one task at the same time. For example, a worker can be painting some furniture while another can in the same moment use the air compression gun.



Compressor

The compressor is used more than 7 times a day and it is also used to eliminate the dust that gets stuck in places where the dust collectors cannot reach.

Chop Saw



The chop saw is used to cross cut, make frames, straighten pieces of wood. It is a high performance machine that is among the first ones our apprentices in the carpentry shop learn how to use because it cuts smaller pieces of wood and can be operated only by one person. It allows the workers to cut wood diagonally with high precision.

Chop Saw

The chop saw is used mostly to cut bigger pieces of wood or particleboard that require high precision and cannot be handled with the hand saw .

Hand circular saw

This machine is used to cross cut by hand when the crosscutting had to be done at 90 degrees. It is used in particular for smaller jobs that can be performed by hand.



Drill with batteries



This tool is used every day in order to make holes in the wood when building furniture or other pieces of furniture that need to be assembled. It is used to screw in screws and to take them out if necessary. The possibility to use it with battery allows the people working in the carpentry shop to work on furniture even in those corners in the shop where there is no power outlet. As a result, people need to move the furniture less (limiting the possibility of breaking it before it is done) and can use space more efficiently.


Pickup Truck




The pickup truck purchased with Rotary funds is used to transport raw materials and finished products. It is currently only driven by the Carpentry program manager because none of the apprentices currently have a drivers license or are reliable enough to be given the truck. In the future, we would like to offer to those clients that perform better the possibility to get a driver's license and to be in charge of installing the finished products in houses.

Pickup Truck

The pickup truck holds a lot of material and has low mileage per liter. It is a very reliable car and it has been driven 12000 km from march until now.



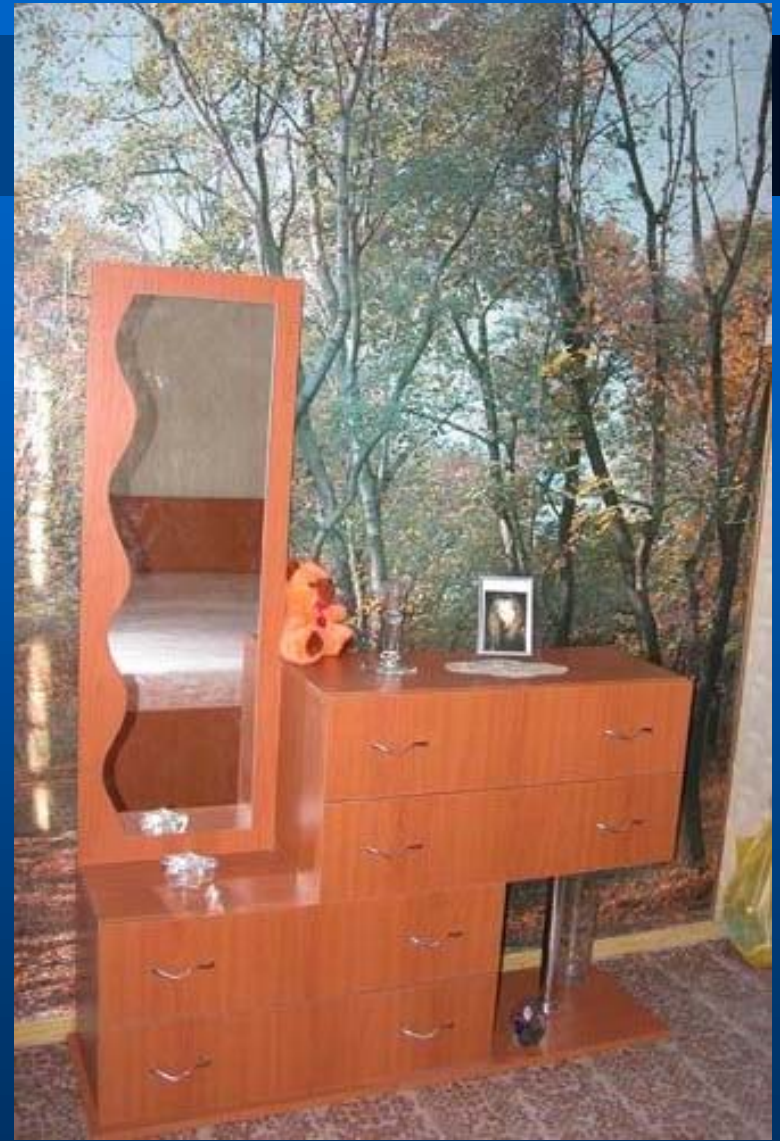
What has changed in the
carpentry shop since we
receive the Rotary equipment?



All this machines have greatly improved the ability to produce better quality furniture. The program manager and the apprentices work together to build chairs, tables, computer tables, and kitchen and bedroom furniture. Following are examples of the work that is done in the GSB workshop and that have already been installed in the houses of who purchased them



Bedroom







Rotary Equipment

Noah's Ark

Noah's Ark Project

Noah's Ark is a long-term training program for young women with mental disabilities and serious behavioral problems. It is a program that is run in partnership with the Little Sisters, a group of Italian nuns. The Noah's Ark house currently sleeps 5 women. Three of them work in the Noah's Ark greenhouse producing vegetables and they raise chickens and pigs. The other two work at the GSB restaurant.

Noah's Ark received a small tractor that has been purchased with the Rotary grant. The tractor greatly improved the lives of the apprentices living and working at Noah's Ark



Before receiving this tractor, the apprentices had to dig by hand.

Before...



Asked about the performance of the tractor, Eva, one of the GSB apprentices, said "you should just see how fast it goes when we dig! And how deep!"

Tractor



Rotary Equipment

GSB Office

GSB Office

The GSB office provides administrative support to the programs. It received a Xerox machine, a computer and a laser printer purchased with the Rotary grant. The equipment is used daily by the GSB staff and greatly eases the every day operations in the office.

In addition, in November GSB established a connection with another non-profit in Romania called PC Class that does IT training for children and youth from disadvantaged communities. The two organizations have have talked about the possibility to use their material and possibly staff to train our apprentices. We are now developing this idea.



GSB Office

Before March, the social worker was sharing the computer either with the marketing manager or the executive director.



Sewing machines.

GSB worked on a project to set a sewing workshop in which clients would be employed. The organization secured a physical space (close to the Carpentry shop) where to set up a workshop and began to renew it. Last year, it also contacted some people interested in setting up a workshop. All of them, however, did not express any more interest. Currently, the sewing machines have been stored and GSB is trying to find a person that would either be willing to teach to the clients how to sew or for an entrepreneur that would rent the machines and employ some of the youth from the GSB target population in his/her business.



Summary of GSB services

GSB offers many kind of services to their target population, namely youth who has lived in a state or private orphanage and is older than 18. We employ some of them in our program, but we interact also with others. We help almost all the orphans in Beius and in the neighboring area (more than 50 people) with support for finding a job, seasonal work if we can, food, clothes, relations with police, ID cards, passports, doctors, housing, and visits on the workplace. We help people by purchasing medicines and food for them on an occasional basis, but our goal is to make them understand the importance to have a wage and therefore care to have a job and integrate in society.

What difference does GSB make
in the life of Beius orphans?

We have helped more than 60 kids with different kind of help (donations, support, finding job, food, clothes, housing, jobs).

Since last year, when I first started with them, I know for sure that at least 3 people left the organization and found full time jobs. One person left the organization and is currently unemployed.

Who are we helping now?

3 youngsters at the restaurant

4 plus 1 (non-regular basis) at the Carpentry Shop

4 in the partnership with Habitat for Humanity in Beius

3 in the partnership with Habitat for Humanity in Cluj

6 on a construction project to provide four apprentices with house

These people receive:

monthly wage, health insurance and assistance, counseling, recreational activities, job search assistance and life skills training.

3 at the Noah's Ark house

These people are not formally employed, they live at the house, receive pocket money, food, clothes, ect.)

Some challenges of our job

Staff is committed and works well with me but often does not have proper training or resources.

Romania is NOT famous for successful programs, training sessions and so on.

On a daily basis, we fight the attitude of people, churches, corruption, the inability of the kids to believe in themselves. Challenging, but at time overwhelming.

We would like to thank

Lake Chatuge Rotary Club, Hiawasse, GA

The Rotary Foundation

Union County RC

**Vallejo RC, Mexico City
and Oradea RC, Romania**

For their support

They have made a difference in our everyday lives
